

## Secondary processing and products

**STRICKLAND  
BROTHERS LTD**



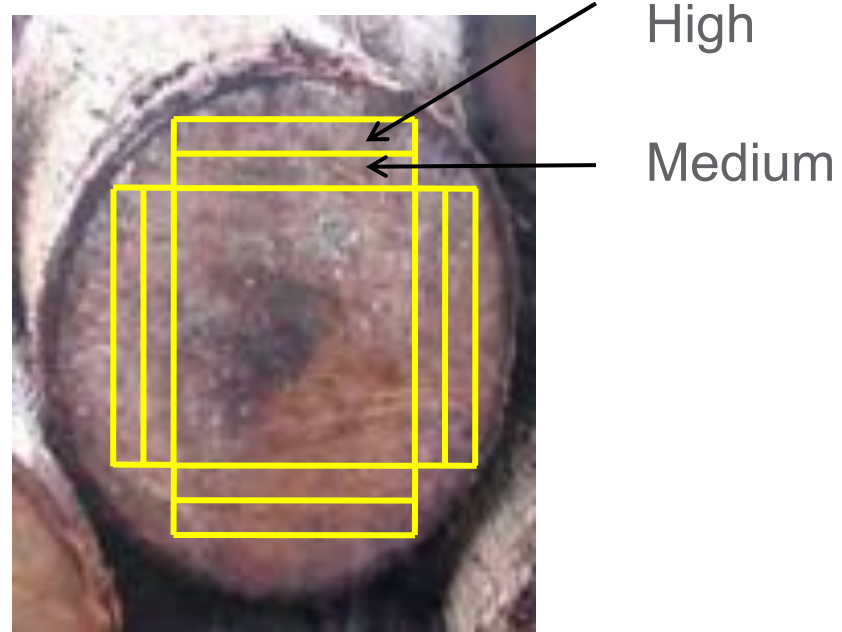
## Secondary processing

- grading
- drying
- machining



# Grading

- boards sorted by hardness
- high and medium hardness required for flooring



# Drying

- Improves
  - stability
  - hardness
  - transport costs
  - strength and stiffness
  - resistance to pests



## Kiln drying

- essential to reach target moisture content for export
- high energy costs offset by faster throughput
- complete control over drying conditions and quality





10 m<sup>3</sup> gas-assisted solar kiln was installed at Forestry Department to run research trials (\$100,000 FJD).



# Machining

- Compared with most hardwoods, cocowood machines require:
  - sharper tool edges
  - more frequent maintenance
  - slower feed speeds
- Optimised feed speeds are now known for planing, moulding and sanding to produce excellent quality



# Products

- Engineered flooring
  - Laminated pancake construction
  - Re-sawn
  - Glued to plywood
  - 133 mm x 15 mm





## Products

- Flooring
- Furniture
- Columns
- Laminated bench tops
- Step treads



## Secondary products

- Plant growing media and mulch
  - properties within suitable range (water retention, pH, etc)
- Ethanol
  - lower starch content than anticipated
  - probably not feasible
- Coreplate, blockboard
  - cocowood has suitable properties
  - competition from existing products

